



# A experiência do projeto ProEmpower

Compras Públicas de Inovação (CPI) – Experiência Portuguesa no H2020

Agência Nacional de Inovação

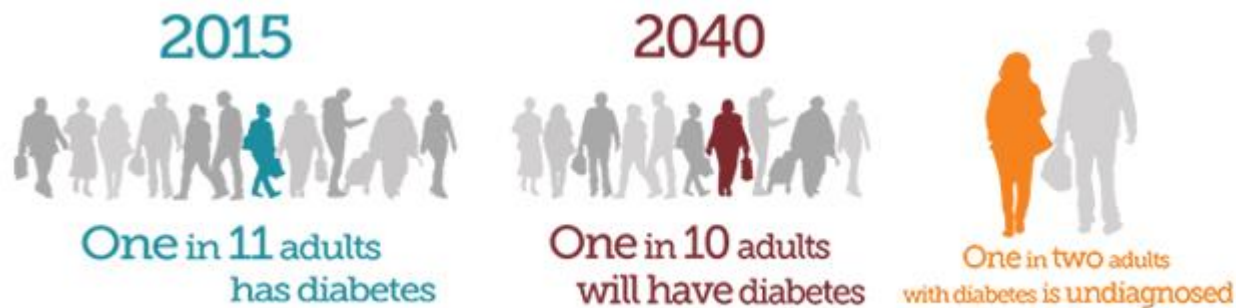
26 March 2019



# The need

## Why diabetes?

- The procurers' care systems are also facing an increasing prevalence of diabetes. The disease is expected to grow globally from 8.8% in 2015 to 10.4% in 2040 if no effective counter measures are put in place.
  - Diabetes is seen more and more in younger years
  - But is also increasing among older people, with the age group 80+ seeing a strong onset of diabetes.



Source: International Diabetes Federation. IDF Diabetes Atlas, 7 ed. Brussels, Belgium: International Diabetes Federation, 2015.

## The costs of diabetes

- The costs associated with diabetes include increased use of health services, loss of productivity and disability.
  - As a result, diabetes imposes a large economic burden on individuals and families, national health systems and countries.
  - Diabetes treatment accounts for 12% of healthcare spending.



Source: International Diabetes Federation. IDF Diabetes Atlas, 7 ed. Brussels, Belgium: International Diabetes Federation, 2015.



# The group

- We are procurers from four regions in Europe
- We care for 12 million diabetes patients



Türkiye Cumhuriyeti Sağlık  
Bakanlığı, Turkey



Servicio Murciano de Salud,  
Spain

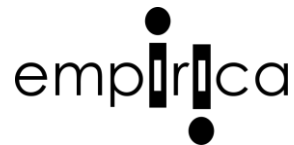


Soggetto Aggregatore della  
Regione Campania, Italy



Serviços Partilhados do Ministério da  
Saúde, EPE, Portugal

- Supported by a team of researchers, consultants and healthcare providers

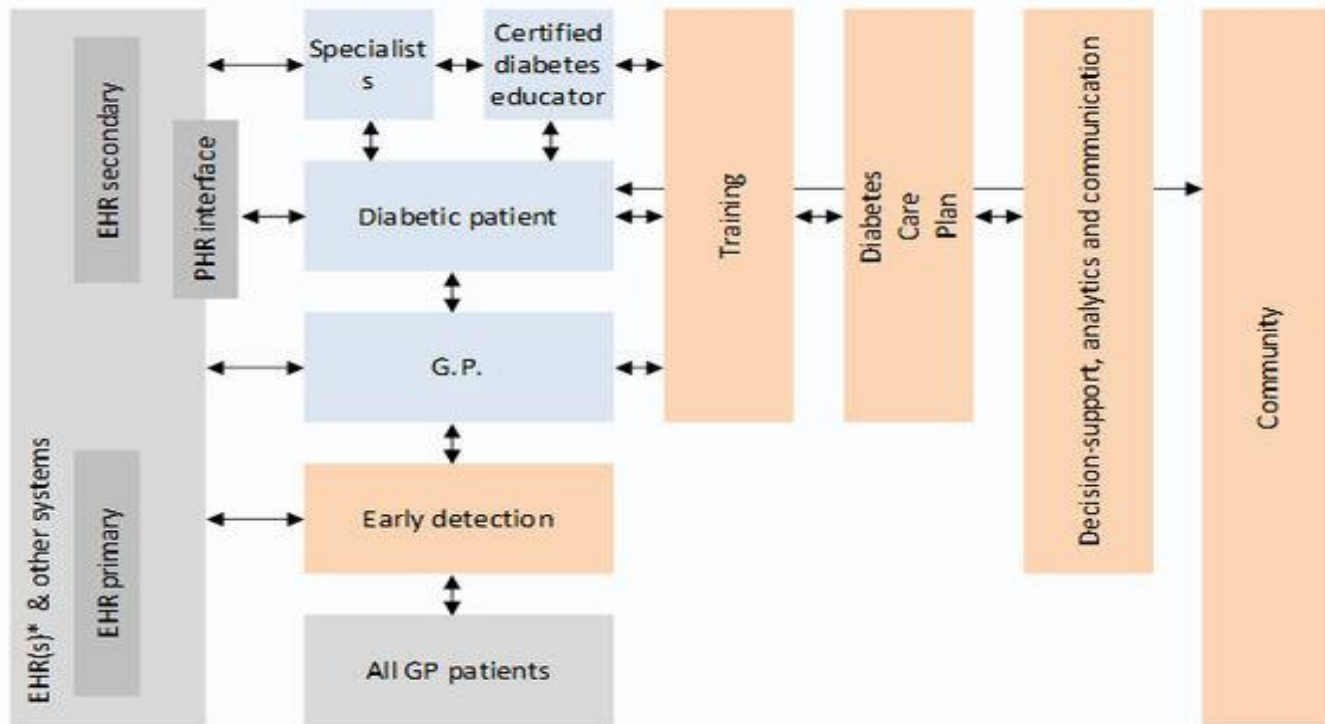


- We found the market to offer only partial solutions with lacking integration into healthcare processes
- Procure a personalised diabetes management solution to support patients with Diabetes Mellitus type 2





# Key aspects and actors of the envisioned proEmpower solution



\* There might only be one EHR for both primary and secondary care  
 e.g. Turkey – e-Nabiz, Murcia – OMI for primary, SELENE for hospital care

Aspects, for which suppliers need to develop solutions

Existing infrastructure, knowledge or setting

Actors



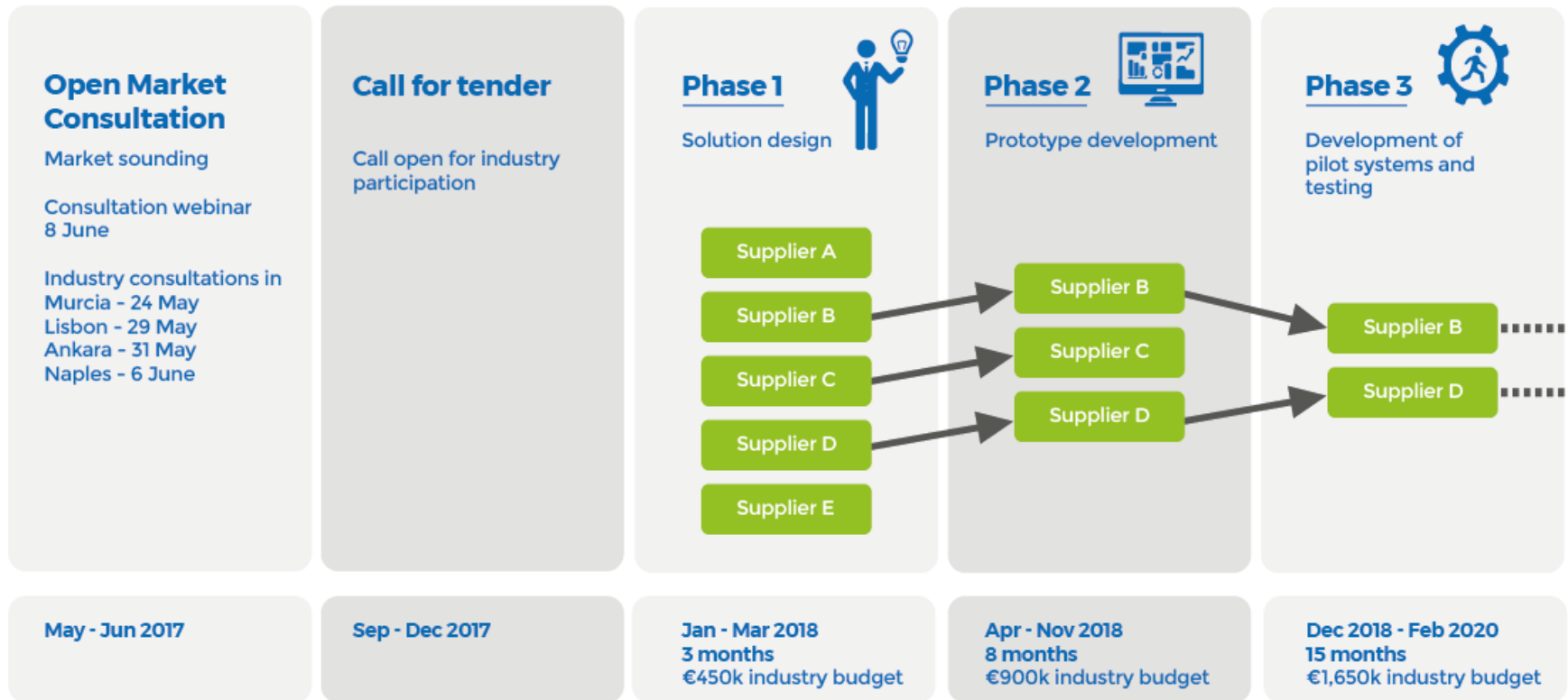
## The tool

## What is PCP?

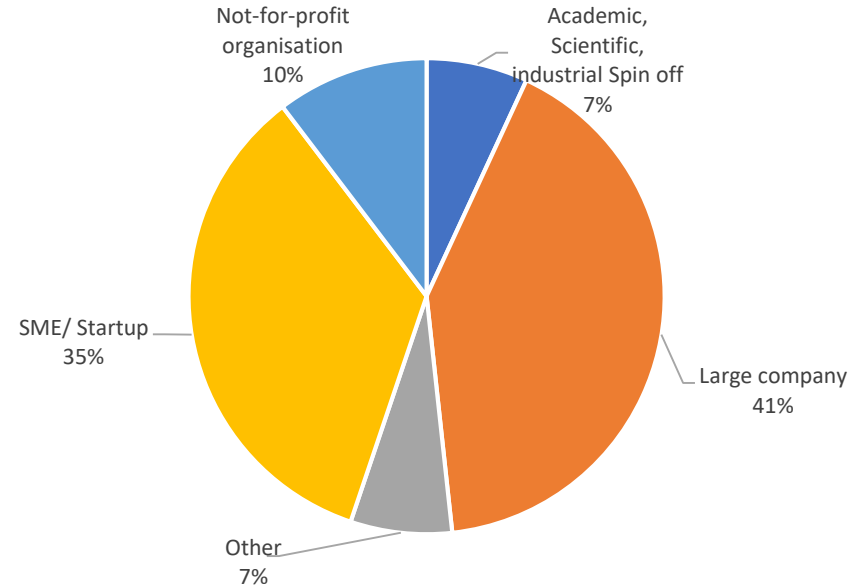
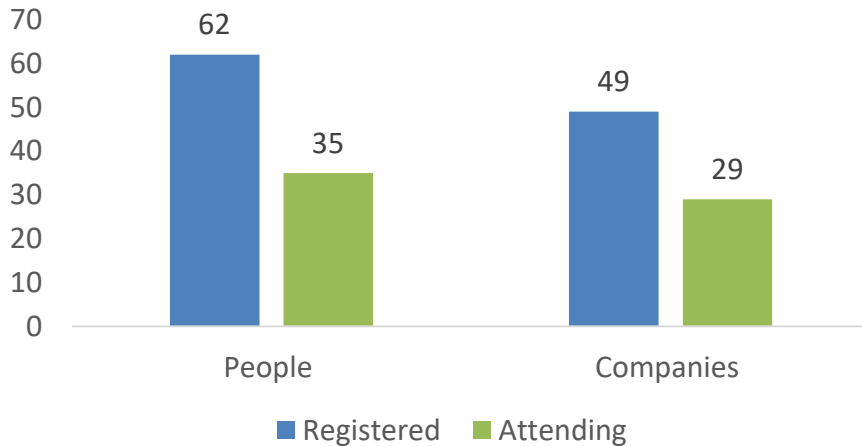


- **Pre-Commercial Procurement (PCP)** is an instrument of public procurement of **Research and Development (R&D)** services when there are no fitting market solutions (unmet need).
- **Public procurers** act as **demanding customers of technology** that promote the **development and testing** of new solutions.
- The **European Commission** is supporting PCP as a tool to stimulate innovation.

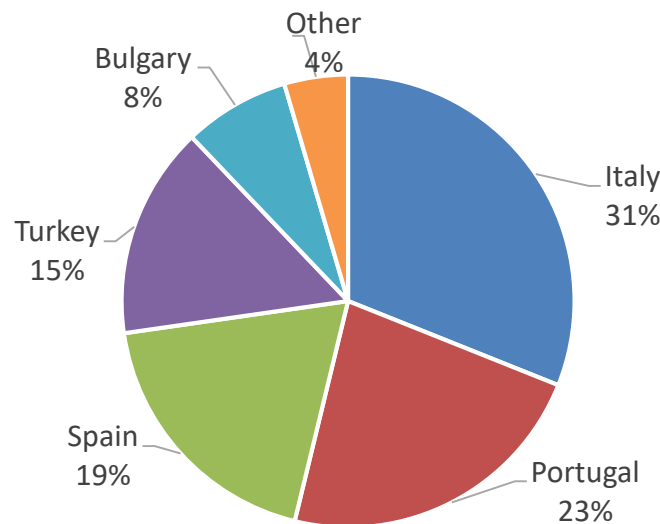
# The PCP roadmap



Total subcontracting costs € 3M



## At all meetings Nationality of attendees



- Publication of contract notice in TED – 18.01.2018  
Deadline for submission of tenders – 21.03.2018
  
- 15 proposals evaluated
  - 1 Portuguese company in 1 consortium
  - 2 Portuguese companies subcontracted by 2 consortiums
  
- Documents + Quality criteria + Price
  
- 5 proposals selected
  - 1 Portuguese company in 1 consortium
  - 2 Portuguese companies subcontracted by 2 consortiums

- Start of phase – 01.05.2018
- Submission of offer (tender) for next phase – 04.06.2018
  
- Improve solution design
- Incorporate the recommendations made by the evaluators in their report
  
- 3 proposals selected
  - 1 Portuguese company in 1 consortium
  - 1 Portuguese company subcontracted by 1 consortium

- Start of phase – 02.07.2018  
Submission of offer (tender) for next phase – 04.01.2019
  
- Development of ProEmpower prototype systems
  - v1 – non- or partly functional prototypes, teleconference, healthcare professionals
  - v2 – functional prototypes, face-to-face presentation, healthcare professionals, patients and informal caregivers
  
- 2 proposals selected
  - 1 Portuguese company in 1 consortium



- Start of phase – 01.02.2019  
Submission of offer (tender) for next phase – 31.03.2020
- Development of pilot systems for an extended test under real-life conditions

Pilot Site	Number of users of the system in evaluation	
	<i>Diabetes patient, at-risk patient users</i>	<i>Clinician users</i>
Turkey	50	12
Portugal	50	12
Italy	50	12
Spain	50	12
<b>Total</b>	<b>200</b>	<b>48</b>

per solution

- Manage expectations within the group
- Commission wants to make sure financing leads to practice
  - Clear ideas
  - Involvement of stakeholders
  - Availability of resources
- Balance between flexibility and formality
- Reflection on next steps



Thank you for your attention!